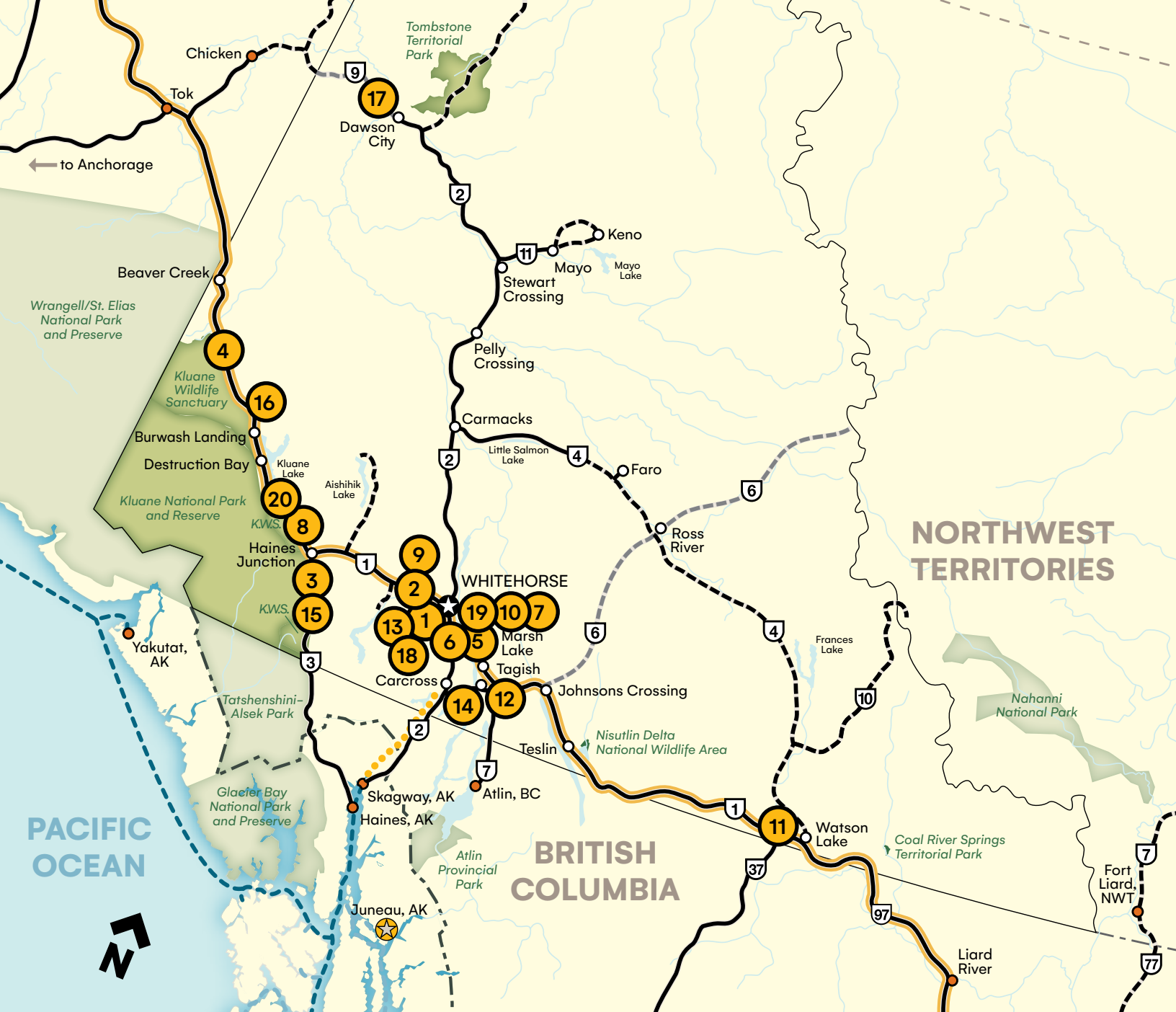


Yukon Lodges and Cabins

From rustic to regal, your clients will enjoy their stay in a cozy Yukon lodge or cabin.



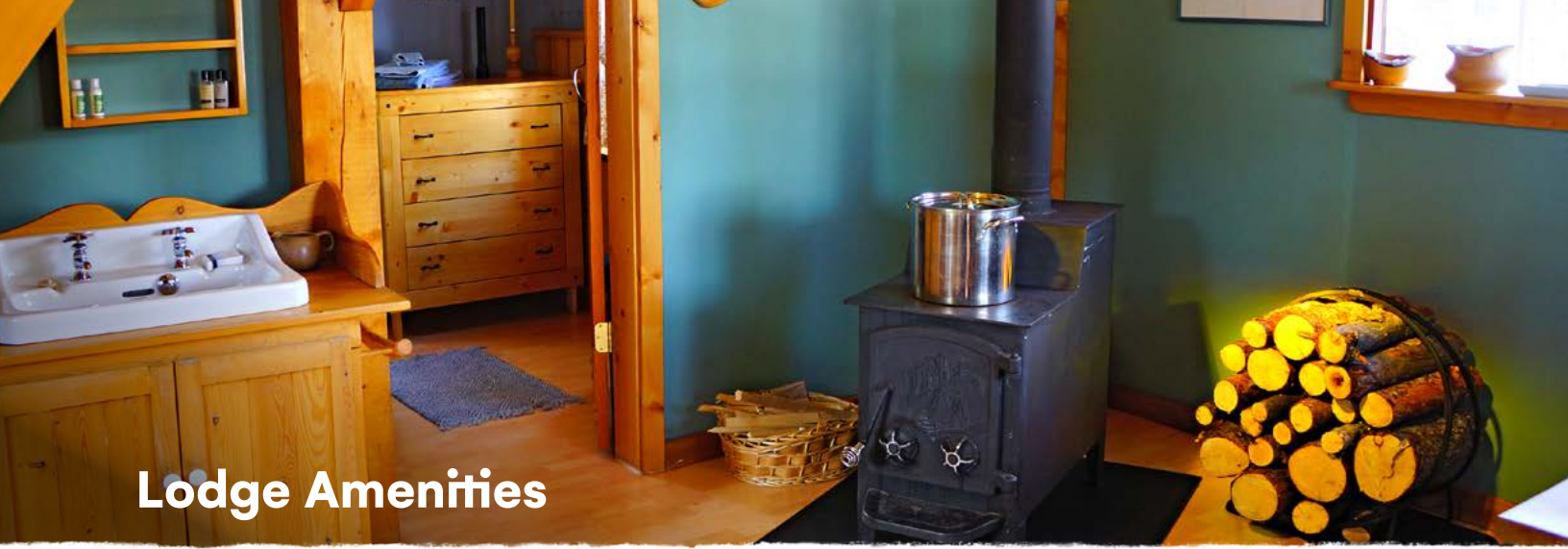


Yukon Lodges

There are plenty of unique properties to choose from:



- | | |
|---------------------------------|-------------------------------------|
| 1 Boréale Explorers | 11 Nugget City |
| 2 Cranberry Lodge Guest House | 12 Six Mile River Resort |
| 3 Dalton Trail Lodge | 13 Sky High Wilderness Ranch |
| 4 Discovery Yukon Lodgings | 14 Southern Lakes Resort |
| 5 Inn on the Lake | 15 Kluane Cabins |
| 6 Kaleido Lodge Yukon | 16 Tincup Wilderness Lodge |
| 7 Little Atlin Lodge | 17 Triple J Hotel and Cabins |
| 8 Mount Logan EcoLodge | 18 Wheaton River Wilderness Retreat |
| 9 Muktuk Adventures | 19 Yukon Black Spruce |
| 10 Northern Lights Resort & SPA | 20 Yukon Lake Cabins |



Lodge Amenities

Cranberry Lodge Guest House
 Boreale Explorers
 Discovery Yukon Lodgings
 Dalton Trail Lodge
 Inn on the Lake
 Kaleido Lodge Yukon
 Mount Logan EcoLodge
 Little Atlin Lodge
 Northern Lights Resort & SPA
 Mukluk Adventures
 Sky High Wilderness Resort
 Six Mile River Resort
 Nugget city
 Southern Lakes Ranch
 Tincup Wilderness Lodge
 Kluane Cabins
 Triple J Hotel and Cabins
 Wheaton River Wilderness Lodge
 Wilderness Retreat
 Yukon Black Spruce
 Yukon Lake Cabins

	Cranberry Lodge Guest House	Boreale Explorers	Discovery Yukon Lodgings	Dalton Trail Lodge	Inn on the Lake	Kaleido Lodge Yukon	Mount Logan EcoLodge	Little Atlin Lodge	Northern Lights Resort & SPA	Mukluk Adventures	Sky High Wilderness Resort	Six Mile River Resort	Nugget city	Southern Lakes Ranch	Tincup Wilderness Lodge	Kluane Cabins	Triple J Hotel and Cabins	Wheaton River Wilderness Lodge	Wilderness Retreat	Yukon Black Spruce	Yukon Lake Cabins	
Open in the summer	•	•	•	•	•	•	•	•	•	•	•	•	•	•	•	•	•	•	•	•	•	•
Open in the winter	•	•			•	•	•	•	•	•	•	•	•	•	•	•	•	•	•	•	•	•
Capacity	14	9	30	14	15	12	14	20	16	16	37	12	18	12	20	10				14	20	8
Wi-Fi	•	•	•	•	•	•	•	•	•	•	•	•	•	•	•	•	•	•	•	•	•	•
Electricity	•	•	•	•	•	•	•	•	•	•	•	•	•	•	•	•	•	•	•	•	•	•
Meals available	•		•	•	•	•	•	•	•	•	•	•	•	•	•	B	•			B		
Self-catering option	•	•			•	•	•	•	•	•	•	•	•	•	•	•	•	•	•	•	•	•
Fly-in only																						
Offers excursions	•		•	•	•	•	•	•	•	•	•	•	•	•	•	•	•	•	•	•	•	•
Indoor toilet	•	•	•	•	•	•	•	•	•	•	•	•	•	•	•	•	•	•	•	•	•	•
Outdoor toilet		•							•	•				•	•					•	•	

*Content collected is accurate at the time of print. Bed types include King, Queen, Double, Twin, Futon, Sofa bed, hideaway and bunk bed. Please contact lodge for detailed information.

Contact Information: Tourism Yukon

Yas Yamamoto
 Market Development Manager, Asia Pacific
 P: 867.667.8795 E: yas.yamamoto@yukon.ca

Jennifer Glyka
 Marketing Specialist, Media and Influencer Relations
 P: 867.667.8410 E: jennifer.glyka@yukon.ca

Maurine Forlin
 Market development manager Europe/UK
 P: 867.334.9510 E: maurine.forlin@yukon.ca

Robin Anderson
 Global Marketing Manager
 P: 867.667.3532 E: robin.anderson@yukon.ca

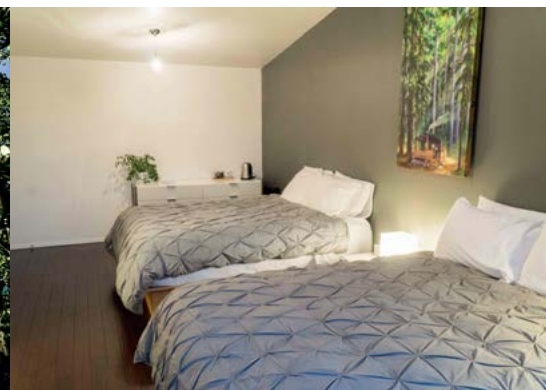


Boréale Explorers

Boréale Explorers is your gateway to a memorable and truly Yukon experience.

Guests will enjoy morning coffee on a private terrace with the looming coastal mountains as a companion. Our 16-acre property is located just 30 minutes from the Whitehorse International Airport and seconds away from memorable adventures. We specialize in sumptuous northern cuisine and ensuring our guests fall in love with the Yukon.

Location	South Klondike Highway
Capacity	14
Open	Year-round
Rooms	6 rooms <ul style="list-style-type: none"> • 4 interior rooms (2 beds each) • 2 detached suites, each with private washrooms
Amenities	<ul style="list-style-type: none"> • Wi-Fi, electricity, ensuite in lodge rooms • Hot tub, laundry facilities
Meals	Breakfast included, with additional meals available
Guest Facilities	<ul style="list-style-type: none"> • Private bathrooms with shower only • Indoor toilets



Boréale Explorers

P: 867.393.2896 Toll Free: 888.488.8489 E: info@be-yukon.com

be-yukon.com



Cranberry Lodge Guest House

Located north of Whitehorse and surrounded by forests, mountains and stunning views, Cranberry Lodge is the perfect retreat for your Yukon adventures. Our Guest House offers cozy accommodations with all the amenities and is ideal for independent adventurers and families seeking a relaxing Yukon experience. Close enough to Whitehorse to enjoy diverse dining and cultural experiences, yet far enough to enjoy the peace and quiet of the Yukon wilderness.

The Guest House is constructed from sawn logs and tastefully decorated and furnished with quality furnishings and modern appliances. Enjoy a BBQ or relax in the Midnight Sun on your private back deck in summer, or enjoy the hot tub and fire pit while looking at the northern lights in winter.

Whether you plan your own adventure or enhance your stay with a private yoga class, your stay at Cranberry Lodge will be an authentic Yukon experience to remember.

Location	Ibex Valley, 27 km north of downtown Whitehorse
Capacity	7 to 9 people
Open	Year-round
Rooms	<ul style="list-style-type: none"> • Master Bedroom — Main Floor: 1 Queen Bed • Large Bedroom — Second Floor: 1 Queen Bed and 1 Double Bed • Small Bedroom — Second Floor: 2 Twin Beds • Roll Away Bed and Pull Out Sofa Bed
Amenities	Wi-Fi; all bedrooms are furnished with custom built log beds, side tables, dressers, and spacious closets; fully equipped gourmet kitchen; fire pit and firewood; propane BBQ; Smart television and movie collection
Meals	n/a; Basic staples in kitchen, coffee, and teas
Features	Hot tub; private back deck; Full bathroom on main floor, ¾ bathroom in basement, running water, washer/dryer, independent temperature control in each bedroom, outdoor gear room in basement with walkout access
Guest Facilities	n/a



Carolyne & Al
 P: 867-668-2689 E: cranberrylodgeyukon@gmail.com
 cranberrylodgeyukon.com

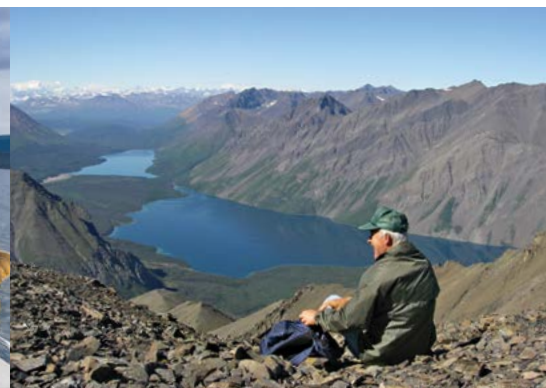


Dalton Trail Lodge

Follow the “call of the wild” and discover what nature has created in Canada’s most western territory.

Dalton Trail Lodge is a first class wilderness and fishing lodge located at the shores of Dezadeash Lake, bordering Kluane National Park & Reserve. The fauna and flora are among the most impressive to be found on the North American continent. Witness majestic mountains, immense forests and crystal-clear lakes and rivers. Fly fish, spin cast or troll for huge lake trout up to 60 lbs, monster pike, acrobatic Arctic grayling, rainbow trout, kokanee, whitefish, inconnu and salmon. Our infrastructure includes jet boats, ATVs, outpost cabins, fishing and camping gear. We access more than 20 different lakes and rivers. We offer guided hiking tours, river rafting, wildlife watching and many other outdoor activities. The lodge is rated 4 stars by Canada Select, which means guests can expect very clean accommodations, first class service and outstanding meals.

Location	Kluane (South)
Capacity	30
Open	End of May through end of September
Rooms	<ul style="list-style-type: none"> • 2 double rooms in the main lodge • 8 single rooms in the main lodge • an additional 10 double rooms in 4 cabins
Amenities	<ul style="list-style-type: none"> • Free Wi-Fi, lounge, restaurant on site, games room, tennis court, guided activities and outpost cabins • Including half-day or full day excursions • Laundry facilities
Meals	Fine international gourmet cuisine — breakfast, lunch and dinner
Features	<ul style="list-style-type: none"> • Guided tours, including hiking, canoeing, biking, chartered fishing. • Rental gear available
Guest Facilities	<ul style="list-style-type: none"> • Rooms with shower and bathtub • Rooms with shower only • Indoor toilets



Hardy Ruf

P: 867.634.2099 **E:** info@daltontrail.com

daltontrail.com



Discovery Yukon Lodgings

Discovery Yukon Lodgings has been described by guests as an oasis of green and wildflowers.

We are nestled at the foothills of Kluane National Park and Reserve, at Km 1818 Alaska Highway. Located 50 km southeast of Beaver Creek, midway between Whitehorse, Yukon and Fairbanks, Alaska.

Each of our cozy hand-crafted log cabins has its own private bathroom, deck, barbecue and uninterrupted mountain views. They are furnished with two extra long twin beds, luxurious bedding, microwave, fridge and tea/coffee making facilities. For those who like more space, our two fully furnished Queen Suites are ideal. A couch converts to an extra queen size bed for those traveling with family.

Location	Kluane (North)
Capacity	14
Open	Mid-May to mid-September
Rooms	<ul style="list-style-type: none"> • 5 cabins with two beds • 3 cabins with private bath and two beds • 2 hotel rooms with 1 queen bed + double sofa bed
Amenities	Restaurant, Wi-Fi, telephone, off-grid, laundromat, microwave, fridge, coffee maker, kettle and toaster in all the rooms, BBQ's on all decks, oven in communal kitchen at extra charge
Meals	Home prepared breakfast, packed lunch and evening meal at an additional cost
Features	Guided aurora viewing; self-guided hiking, canoeing, biking, and aurora viewing
Guest facilities	<ul style="list-style-type: none"> • Rooms with shower and bathtub • Rooms with shower only • Indoor toilets



Amanda Harris

P: 867.862.7408 **E:** info@discoveryyukon.com
discoveryyukon.com



Inn On The Lake

Photography: Paddy Pallin/Nathan Hendry

Featured on Martha Stewart Living and listed by National Geographic Traveller as one of the Top 150 places to stay for 2009.

This lodge is located 35 minutes by car from Whitehorse. The location is ideal for daily excursions and attractions in Whitehorse; Atlin, British Columbia and Skagway, Alaska. The resort has a number of room categories and cottage options. In the summer, mountain bikes, canoes, kayaks, pedal boats, fitness centre, hot tub and sauna are available for use. In the winter, snowshoes are included and this area is well-known for Aurora Borealis watching. Check out our all-inclusive packages. This is one of North America's few places where guests can stay and see the aurora right from their suite.

Location	Southern Lakes (Alaska Highway)
Capacity	15
Open	Year-round
Rooms	11 rooms <ul style="list-style-type: none"> • 1 room x 1 bed • 7 rooms x 2 beds • 2 apartments x 2 beds • 1 cabin x 4 beds
Amenities	<ul style="list-style-type: none"> • Daily housekeeping, Wi-Fi access, sauna and hot tub, and banquet room • No cooking in main lodge (cabin and apartments have kitchenettes)
Meals	Meals are available for an additional cost
Features	Fitness centre, mountain bikes, canoes, kayaks, limited fishing gear, winter clothing rental
Guest Facilities	<ul style="list-style-type: none"> • Rooms with shower and bathtub • Rooms with shower only • Indoor toilets



Carson Schiffkorn

P: 867.660.5253 **E:** carson@exceptionalplaces.com

exceptionalplaces.com



Kaleido Lodge Yukon

Another well-known Whitehorse area lodge, Kaleido (formerly the Auberge Yukonnaise) re-opened in 2015 under new management. This B&B is located just 25 minutes drive from downtown Whitehorse (near the junction with the South Klondike Highway). It has five guest rooms, including a one bedroom suite with kitchenette. Rooms are equipped with twin, double, and queen size beds, cot, private bathrooms and convenient kitchenette. A continental breakfast is served.

Location	Whitehorse (Alaska Highway)
Capacity	12
Open	Early November – mid April July 1st – October 15th
Rooms	5 rooms plus one suite <ul style="list-style-type: none"> • 1 room x 1 bed • 4 rooms x 2 beds • 1 suite x 3 beds
Amenities	<ul style="list-style-type: none"> • Kitchen and living room • Electricity and Wi-Fi
Meals	Breakfast included, dinner available
Features	<ul style="list-style-type: none"> • Spectacular aurora viewing from the Lodge • Japanese hospitality • Shuttle service to/from the airport and Downtown Whitehorse – at cost
Guest Facilities	<ul style="list-style-type: none"> • Rooms with shower and bathtub • Rooms with shower only • Indoor toilets



Lodge Manager

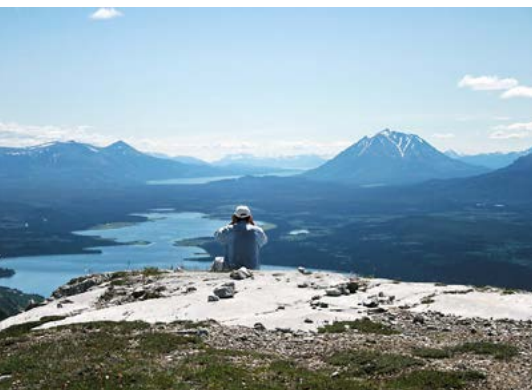
P: 867.668.2878 E: Kaleido@j-pactravel.com
sites.google.com/view/kaleido-lodge-yukon/home



Little Atlin Lodge

Nestled between mountain and water, Little Atlin Lodge's two cabins offer spectacular views, rustic comfort and easy access to the beauty of the Yukon's Southern Lakes area. These private family friendly lakefront cabins have all you need for a relaxing getaway. Relax beside the cozy wood stove or read a book on the lovely sun filled deck. The Pine cabin has two bedrooms and is great for up to 6 guests. The Spruce Cabin has one large bedroom and is great for 5 guests. Each cabin is fully stocked with comfortable bedding, cozy bathrobes, kitchenware, books, games and more. Kitchens are well equipped with everything you need for a self-catered stay as well as indoor toilets and showers. Enjoy the outdoor firepits, BBQ's and picnic tables and of course wood fired hot tubs.

Location	KM 6 Atlin Road – Little Atlin Lake
Capacity	Summer – 13 Winter –13
Open	Year-round
Rooms	3
Amenities	Two private off-grid guest cabins that have their own BBQs on private decks, fully equipped kitchens with propane appliances and full plumbing in washrooms. Fire pits and lake access. Private wood fired hot tubs. Canoes and fishing gear available for guests and motor boat rentals. Cell service throughout the property and access to hiking trails.
Meals	No Meals
Features	All inclusive
Guest facilities	Private access to the lake from a private cabin. Wood fired hot tubs at each cabin. Dock. Wine and spirits tasting available with 48 hour notice with cheese pairing. Boat rentals available. Complimentary fishing gear and canoes available to use.



Shannon Mallory
 P: 780.709.0917 E: littleatlinlodge@gmail.com
littleatlinlodge.com



Mount Logan EcoLodge

This Rustic chic lodge has the most wonderful view you could possibly imagine.

With 3 rooms in the lodge, the Old Gold Rush Cabin (oldest building in Haines Junction), the Mount Archibald Pod, the School Bus, the Prospector tent and the Martha Black Yurt, guests will find an accommodation to their liking. They will have an authentic Yukon experience, gourmet meals and many options for outdoor leisure and fun. The EcoLodge also has its own guiding company call Yukon Guided Adventures offering hiking, fishing, sea kayaking, snowmobiling, dog sledding (fall and winter!) and more!

Location	Kluane
Capacity	10 in Lodge (14 when privately rented) 28 on entire site in summer
Open	Year-round (closed Nov 15 to Dec 15)
Rooms	2 rooms x 2 queen beds 1 room x 1 queen bed 1 yurt x 1 queen bed and double sofa bed 1 cabin x 1 queen bed 1 Pod x 1 queen bed 1 School Bus x 1 queen (June 1 to sept. 15) 1 Prospector tent x 1 queen bed and double sofa bed
Amenities	Wi-Fi, telephone, hot tub, sauna, guided activities handicap accessibility
Meals	All inclusive: Cooked breakfast included and a superb 3 course dinner
Features	All inclusive - Sister company "Yukon Guided adventures". Hot tub and sauna



Roxanne Mason
 P: 867.634.2817 E: info@mountloganlodge.com
 mountloganlodge.com



Muktuk Adventures

Glamping in the Wilderness

Our Cabins are located a convenient 25min from downtown Whitehorse, in the scenic Ibex Valley. Undoubtedly one of the most beautiful, natural landscapes you will ever encounter, the Yukon is legendary. No matter if it's summer or winter, our cozy and rustic cabins are the perfect home away from home. You can book the cabins and explore the Yukon at your own leisure or choose one of our packages that includes meals and adventures.

Location	Ibex Valley, 27 km north of downtown Whitehorse
Capacity	3 to 4 guests per cabin
Open	May 15 — April 15
Rooms	2 independent cabins Cabin # 1 off grid all year round (no plumbing, no electricity) Cabin # 2 running water and power between June 1st and October 15, depending on temperature. no plumbing between October 15 to June 1st
Amenities	Free Wi-Fi in Cabin # 2. Off Grid, hiking trails nearby. Guided activities available all year round.
Meals	Breakfast, lunch and dinner at additional charge depending on availability. Booking ahead of time required. Can cater to most dietary restrictions.
Features	Guided hiking, canoeing and dog sledding tours. Over 100 dogs to snuggle with.



Manuela Larsen

P: Office 867.668.3647 **C:** 867.335.0862 **E:** info@muktuk.com or manuela@muktuk.com
muktuk.com



Northern Lights Resort & SPA

A warm Welcome to the Northern Lights Resort & SPA. Experience the Magic of the Yukon with us

Welcome to our family-run Northern Lights Resort & Spa in the Yukon, amidst the rural idyll of the picturesque Yukon River Valley, close to Whitehorse the “wilderness city” but miles away from its hustle and bustle. Our motto is “**Relax-Enjoy-Feel Good**”, and in line with that we offer you wellbeing and indulgence, and our own special way of pampering you. Our Alpine Chalets and the Aurora Glass Chalets are modern and lovingly designed. We offer Bed & Breakfast accommodations and Getaway—Specials in the Summer season and all-inclusive packages for Northern Lights Viewing & Outdoor Activities between September and April. After a day of adventure and outdoor activity, relax in our luxury outdoor Jacuzzi or in the spa/wellness area featuring a Finnish sauna, infrared sauna, gym & relax room and a massage room. Enjoy the spectacular panorama and the warmth and attentiveness of our team and treat yourself to some time out for rest and relaxation in the Southern Lakes Area of the Yukon. Leave the daily grind behind and just enjoy feeling good!

Location	Whitehorse (Alaska Highway)
Capacity	14
Open	Year-round
Rooms	<ul style="list-style-type: none"> 7 detached cabins • 4 cabins x 1 queen bed • 2 cabins x 2 twin beds • 1 cabin x 1 king bed
Amenities	All cabins have combined living room and bedroom, fireplace, kitchen or kitchenette, Wi-Fi and handicap accessibility
Meals	<ul style="list-style-type: none"> • All summer stays include a European style continental breakfast and guests may add lunch and/or dinner on request
Features	<ul style="list-style-type: none"> • Fall/Winter/Spring aurora packages are all-inclusive • Guided tours including hiking, canoeing, chartered fishing, snowmobiling, snowshoeing, aurora viewing, dog sledding, ice fishing. Airport shuttle. Winter clothing rentals
Guest Facilities	<ul style="list-style-type: none"> • Private bathrooms with shower only • Indoor toilets • Spa—wellness facilities, sauna, steam room, massages, and gym



Tobias Barth
 P: 867.393.3780 E: info@northernlightsyukon.com
 northernlightsyukon.com



Nugget city

Comfortable private and quiet cabins on the Alaska Highway, 4.5 hours east of Whitehorse and 20 minutes west of Watson Lake.

You'll find unique gift items and native art in The Northern Beaver Post. Enjoy a stay in one of our cottages and cabins or go all out and try our Jacuzzi suite! The Wolf It Down Restaurant and Bakery offers a wide variety of menu items including our famous buffalo steaks, burgers and BBQ rack of ribs! Safe parking for large rigs right in front of your own cabin, lots of amenities, private bathrooms, 24 hour fuel, restaurant, gift shop with lots of great discounts. RV park on site. Family owned and operated.

Location	Watson Lake (Northern Beaver Post)
Capacity	37
Open	Sometimes year round/sometimes seasonal depends on season
Rooms	<ul style="list-style-type: none"> 13 cabins • 6 cabins x 1 bed • 2 cabins x 2 beds • 2 cabins x 1 bed plus pullout • 1 cabin x 2 beds plus cot • 2 cabins under construction to be completed 2022 x 1 bed
Amenities	Fridge, coffee maker, satellite TV, Wi-Fi, private bathrooms, hair dryer, private deck with sitting area, parking in front of the door
Meals	Restaurant on site, no meals included
Features	Private, natural setting with lots of trails and lakes within walking distance
Guest Facilities	Seasonal pay laundry, Seasonal Pay RV and car wash, 24 hour fuel, trails, hiking, 20 minutes from Watson Lake on the Alaska Highway. Bird watching trails.



Scott & Linda Goodwin
 P: 867-536-2307 E: nuggetcityyukon@gmail.com
 nuggetcity.com

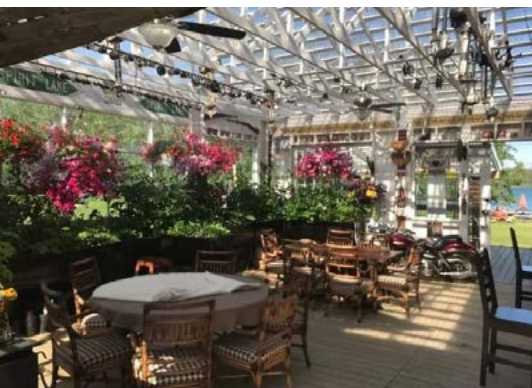


Six Mile River Resort

Six Mile River Resort was developed in 2009, and officially opened in 2012 by Mitch (Mama) & Doug (Capt) Dupont. The resort is located at the bridge which divides Marsh Lake from Tagish River, commonly known as Six Mile River. The resort boasts a 400 ft riverfront, 4.5 acre property with beach, dock and deck with stunning views in a beautiful and tranquil environment. In the early 1900's, this heritage property was an RCMP Telegraph post and passageway to the goldfields of the Klondike. You'll sense of the days of '98, from the heritage cabins and the collection of "old, old stuff" all around the resort.

For 10 years the resort has been open to the public as one of the favorite and most popular destinations in Southern Lakes.

Location	Tagish
Capacity	12
Open	May 18 – Sept 5
Rooms	<ul style="list-style-type: none"> • 5 Cabins • (3) with 1 queen bed suitable for 2 guests • (1) with Twin beds suitable for 2 guests • (1) with 2 Double beds suitable for 2-4 guests
Amenities	The Cabins are supplied with opulent beddings. Shampoo, Conditioner, and lotion are included along with lovely bamboo towels. The Double cabin has a small wood stove, or electric heat for backup, a table, and a few chairs. All cabins have a private deck.
Meals	Continental Breakfast (for cabin guests only) Deli sandwiches available for lunch Licenced restaurant by reservation only
Features	Canoes & Kayaks complementary to cabin guests • Fishing licenses available
Guest Facilities	The washroom and shower house are within 100 feet of your cabin Breakfast is included for cabin guests.



Mitch & Doug Dupont
 P: 867-399-4121 E: info@sixmileriverresort.com
 sixmileriverresort.com



Sky High Wilderness Ranch

Sky High Wilderness Ranch is a true Yukon Adventure!

For an authentic, off grid, adventure of a lifetime—Sky High Wilderness Ranch is the place to be! We've staked our claim in the Coastal Mountains of Southern Yukon where the value of our landscapes would outrank any nuggets you will ever find in the Yukon's creeks. At Sky High we know our real riches lay not only in our landscapes but in the Cozy Cabins and lodge nestled in the woods surrounding Fish Lake and the companionship of our 4 legged friends, Huskies & Horses! We offer a traditional Yukon lifestyle where our visitors have the opportunity to experience life "off grid". Strike it rich at Sky High Wilderness Ranch year round!

Location	Whitehorse
Capacity	10–18
Open	Year-round
Rooms	<ul style="list-style-type: none"> 9 rooms • 1 room x 1 bed • 1 room x 3 beds • 6 rooms x 2 beds • 1 room x 4 beds
Amenities	Kitchenette, parking, access to fire pit and BBQ, close walking distance to hiking trails and lake, access to dog sledding, horseback riding, snowmobiling, ice fishing, snowshoeing, aurora viewing and more (no cooking in main lodge)
Meals	Can be arranged upon request for groups of 4 or more, as well as event catering
Features	Rooms in lodge are bunks with queen bed on bottom and single on top with shared living spaces. Cabins have self-contained living space which is ideal for guests who require more privacy
Guest Facilities	<ul style="list-style-type: none"> • Private and shared bathrooms with shower only • Outdoor toilets



Photography: Archbould Photography

Gary
 P: 867.667.4321 E: info@skyhighwilderness.com
 skyhighwilderness.com



Southern Lakes Resort

Yukon's only true lakefront resort!

Only 1.5 hours from Whitehorse, Southern Lakes Resort offers a glimpse into Yukon's pristine wilderness, all the while guests are cozied up in fully equipped cabins with ensuite bathrooms, directly overlooking the lake. Southern Lakes Resort is the ideal home base for day trips to historic Atlin, bustling Skagway or the up and coming Carcross with its world famous bike tracks. The on-site restaurant with outdoor patio overlooking the lake invite you to enjoy a carefully prepared meal or sip a cocktail while enjoying the midnight sun. A special treat is a stay in one of the brand new deluxe villas—spacious, luxurious and with even better views. And yes, the Aurora can be seen from the bed in the villas!

Location	Southern Lakes
Capacity	20-22
Open	Mid-May — mid-Oct Mid-November — Mid April
Rooms	9 Cabins • 7 cabins with 1 queen bed • 1 cabin with 2 queen beds • 1 family cabin with 3 beds (queen and 2 twins)
Amenities	• Electricity, full bedding, towels, propane stove, private porch and lakeview from each cabin, • Wi-Fi and telephone in main lodge • Superior cabin and family cabin have kitchenettes
Meals	Breakfast, lunch and dinner
Features	• Main Lodge has a restaurant and bar/ lounge, garden lounge/patio and free parking • Canoe/kayak and small boat rental, guided hiking, guided ATV tours, fishing charters and sightseeing by boat • Activities are at extra cost and can be booked on the spot
Guest Facilities	• Rooms with shower and bathtub • Rooms with shower only • Indoor toilets • Ensuite



Oliver Pusch

P: 867.334.9160 **E:** info@southernlakesresort.com

southernlakesresort.com



Kluane Cabins

Kluane Cabins offers an alternative style of accommodation to the adventurous client and those seeking wilderness solitude.

We are located 27 km south of Haines Junction on the Haines Highway, adjacent to Kluane National Park. We are off-grid with solar power in our main cabin and shower building. We have 5 private, self-contained cabins with decks, several with mountain views. Cabins are comfortably furnished, and have propane heat, light, and a 2-burner cooktop in the fully supplied kitchenettes. Outdoor toilets are nearby the cabin, and there is a central facility with hot showers and flush toilets. Optional full breakfast is available at an extra cost.

Location	Kluane (South)
Capacity	26
Open	mid-April—mid-October
Rooms	Six one-room cabins, one two-room cabin, one two story deluxe cabin
Amenities	Off grid with solar energy, no wifi, cabins all have kitchenettes, propane or wood heat, lights and 2 burner cooktop. Telephone and fridges available in hosts' main cabin
Meals	Optional full breakfast available at extra cost



Roger and Fiona

P: All year 867.634.2600 **Mobile:** 867.332.2253 **E:** thecabin@northwestel.net
thecabinyukon.com



Tincup Wilderness Lodge

A little paradise far away from any civilization

Situated right on the shore of Tincup Lake close to the Kluane National Park in Canada’s Yukon Territory, surrounded by mile up upon mile of unspoiled natural landscape, Tincup Wilderness Lodge enjoys a truly unique location. The surrounding Ruby Range mountains provide views of breathtaking beauty from dawn to dusk. The Lodge can be reached only by helicopter or floatplane. In order to ensure our guests’ undisturbed privacy in a family environment, we limit bookings to a maximum of 8-10 guests per week. Whether you actively engage in the various activities on offer, or simply spend your time relaxing and enjoying the peace and quiet, your stay will be a truly unforgettable experience.

Location	Kluane
Capacity	8 – 10
Open	Mid-June to mid-September
Rooms	6 rooms (2 single beds or 1 double bed)
Amenities	<ul style="list-style-type: none"> • Wi-Fi, hot tub, sauna • Self-guided activities including hiking, canoeing/kayaking, fishing, and aurora viewing. Guided activities may be available on a request basis.
Meals	All meals are included
Features	Accessible only by air. Boats and fishing gear all provided
Guest Facilities	<ul style="list-style-type: none"> • Private bathrooms, with shower • Indoor toilets



Meinrad Humm
 P: 604.484.4418 E: info@tincup-lodge.com
 tincup-lodge.com



Triple J Hotel and Cabins

Triple J Hotel and Cabins is located in Downtown Dawson City. Our cabins are walking distance to the Museum, City Park and the Visitors Information Centre. This a cozy place to stay while exploring historic Dawson City and all it has to offer.

Location	5th and Queen St opposite the casino
Capacity	36 (For the cabins only, hotel rooms available too).
Open	Seasonal Mid-May through Mid-September Weather dependent
Rooms	18 cabins x 2 double beds
Amenities	Limited kitchenette space, no cooking facilities, stoves or hot plates. Microwave, kettle, fridge, toaster, coffee maker, dishes, small kitchen table and a sink to wash up. Bathrooms with showers no bathtubs.
Meals	Not included
Features	Cozy cabins in the middle of town with limited kitchenette facilities and private bathrooms
Guest Facilities	Laundry facilities, free parking onsite, restaurant and bar on site, free Wi-Fi, airport shuttle service.



Meinrad Humm

P: (867) 993-5323 **E:** reservations@triplejhotel.com

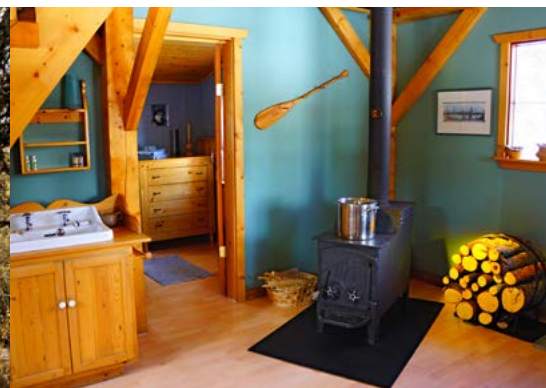
triplejhotel.com



Wheaton River Wilderness Retreat

Wheaton River Wilderness Retreat is located on the bend of the Wheaton River in the heart of the coastal mountains, halfway between Whitehorse and Carcross on the Annie Lake Road. It is under an hour's drive to either destination, and once guests discover the stunning natural beauty of the valley they may want to stay longer than a day. Here we enjoy a rustic lifestyle which includes living with solar power, cooking and heating with wood and exploring the magnificent wilderness which surrounds us. We have explored many of the remote parts of the valley and hope our guests too will discover the spectacular beauty of our area and its endless opportunities for enjoying the great wildlife nearby.

Location	Southern Lakes
Capacity	14
Open	Year-round
Rooms	3 rooms <ul style="list-style-type: none"> • 1 room x 2 beds • 2 cabins x 2 beds
Amenities	<ul style="list-style-type: none"> • The cabins and guest rooms have kitchens, propane light or electricity (only in the guest rooms) • Log sauna and outhouses • Wi-Fi is around the homestead, in the outdoor kitchen and in the 2 guest rooms (no Wi-Fi in the cabins)
Meals	Only breakfast is available for guest room rentals
Guest Facilities	<ul style="list-style-type: none"> • Private bathrooms with blue canisters of water in cabins for washing • Outdoor toilets



Carmen Muehlemann and Robert Perren
 P: 867.668.2997 E: info@wheatonriver.net
 wheatonriver.net



Yukon Black Spruce

Yukon Black Spruce is Whitehorses's newest boutique accommodation.

Just five minutes from the airport, and seven minutes from downtown Whitehorse, Yukon Black Spruce features four cabins. Set delicately into the rocky, forested landscape, each cabin features a kitchen, queen sized bed, couch and compact bathroom. Guests have access to the central deck/ lounge area, firepit, and a custom wood-fired sauna. Driven by a passion for both design and sustainability, from the charred shou sugi-ban siding to the italian marble floors, Yukon Black Spruce will delight you.

Location	Whitehorse
Capacity	8
Open	Year-round
Rooms	4 cabins x 1 Queen bed
Amenities	Wi-Fi, on-site parking, hair dryer, iron and ironing board, organic towels, bathrobes and sheets, board games, books, coffee and tea, art by Eugene Alfred
Meals	None
Features	Kitchenette, queen size bed, couch, compact bathroom, large 10'x10' south facing windows
Guest Facilities	Sauna, fire pit, central deck/lounge area



Laird Herbert

P: 1-867-334-1859 **E:** bookings@yukonblackspruce.ca
yukonblackspruce.ca



Yukon Lake Cabins

Yukon Lake Cabins is on the shores of Kluane Lake, overlooking Sheep Mountain and the Glaciers of Kluane National Park, a UNESCO world heritage site. It is tranquil, private and nature's most unforgettable destination. A great place for family reunions, weddings, gatherings, tours, meetings, retreats and photography.

Absolutely the best for northern lights viewing, hiking, biking, wildlife viewing, glacier viewing, fishing or just sitting and immersing yourself in nature, enjoying the peaceful and calm.

The most amazing place in the world according to our guests who love to travel! Unforgettable destination!

Location	Silver City, on the shores of Kluane Lake
Capacity	Up to 20 people
Open	Year-round
Rooms	<ul style="list-style-type: none"> • 5 cabins, 2 rooms in each • 4 cabins x one double bed and 2 singles beds • 1 cabin x 1 queen bed and 2 singles beds, kitchen and bathroom
Amenities	Power, complete kitchen, bathrooms, fridge, freezers, barbeques, firepits, phone and internet available for emergency. Helicopter and float plane landing. Government airport close by.
Meals	Catered or prepare your own.
Features	Comfortable and private
Guest Facilities	Cabins



P: 867-333-9111 E: info@yukonlakecabins.com
yukonlakecabins.com



