

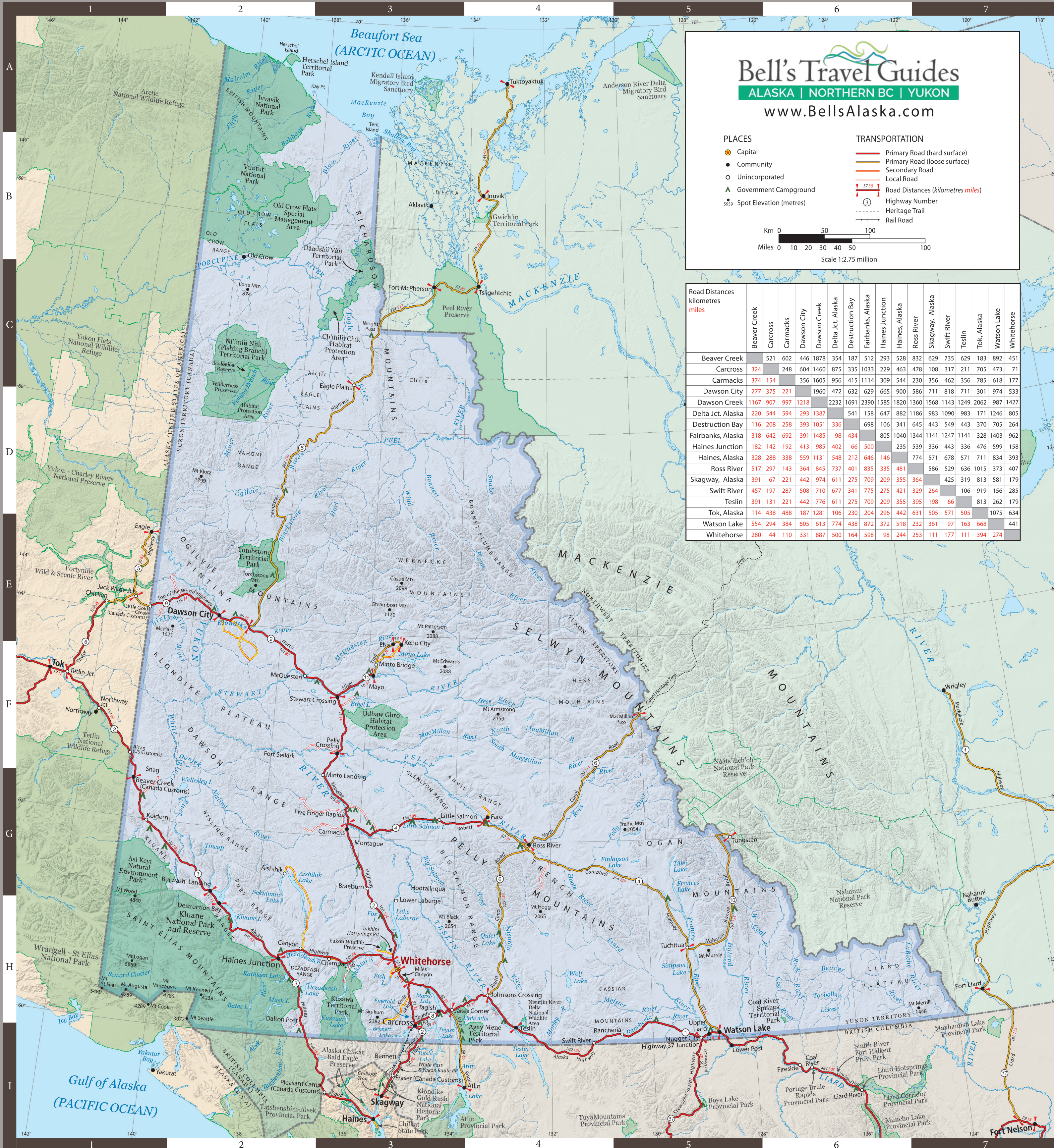
Bell's Travel Guides
Yukon
HIGHWAY MAP



YUKON - BRITISH COLUMBIA
ALASKA - WASHINGTON

It's just like a fairytale.
But if the animals start talking to you, be concerned.

It's a different world up here.
Learn where to see roadside wildlife.



Bell's Travel Guides
ALASKA | NORTHERN BC | YUKON
www.BellsAlaska.com

PLACES

- Capital
- Community
- Unincorporated
- ▲ Government Campground
- Spot Elevation (metres)

TRANSPORTATION

- Primary Road (hard surface)
- Primary Road (loose surface)
- Secondary Road
- Local Road
- Road Distances (kilometres miles)
- Highway Number
- Heritage Trail
- Rail Road

Km 0 50 100
Miles 0 10 20 30 40 50 100
Scale 1:2.75 million

Road Distances kilometres miles	Beaver Creek	Carcross	Carmacks	Dawson City	Dawson Creek	Delta Jct. Alaska	Destruction Bay	Fairbanks, Alaska	Haines Junction	Haines, Alaska	Ross River	Skagway, Alaska	Swift River	Teslin	Tok, Alaska	Watson Lake	Whitehorse
Beaver Creek	521	602	446	1878	354	187	512	293	528	832	629	735	629	183	892	451	
Carcross	324	248	604	1460	875	335	1033	229	463	478	108	317	211	705	473	71	
Carmacks	374	154	356	1605	956	415	1114	309	544	230	356	462	356	785	618	177	
Dawson City	277	375	221	1960	472	632	629	665	900	586	711	818	711	301	974	533	
Dawson Creek	1167	907	997	1218	2232	1691	2390	1585	1820	1360	1568	1143	1249	2062	987	1427	
Delta Jct. Alaska	220	544	594	293	1387	541	158	647	882	1186	983	1090	983	171	1246	805	
Destruction Bay	116	208	258	393	1051	336	698	106	341	645	443	549	443	370	705	264	
Fairbanks, Alaska	318	642	692	391	1485	98	434	805	1040	1344	1141	1247	1141	328	1403	962	
Haines Junction	182	142	192	413	985	402	66	500	235	539	336	443	336	476	599	158	
Haines, Alaska	328	288	338	559	1131	548	212	646	146	774	571	678	571	711	834	393	
Ross River	517	297	143	364	845	737	401	835	335	481	586	529	636	1015	373	407	
Skagway, Alaska	391	67	221	442	974	611	275	709	209	355	364	425	319	813	581	179	
Swift River	457	197	287	508	710	677	341	775	275	421	329	264	106	919	156	285	
Teslin	391	131	221	442	776	611	275	709	209	355	395	198	66	813	262	179	
Tok, Alaska	114	438	488	187	1281	106	230	204	296	442	631	505	571	505	1075	634	
Watson Lake	554	294	384	605	613	774	438	872	372	518	232	361	97	163	668	441	
Whitehorse	280	44	110	331	887	500	164	598	98	244	253	111	177	111	394	274	



#exploreyukon

Follow us on Facebook, Instagram and YouTube for travel tips and awe-inspiring pics. Don't forget to contribute your own uniquely Yukon photos by using #exploreyukon for a chance to be featured on our feeds.

7 photo-op destinations

1. Miles Canyon **H3**
2. Midnight Dome, Dawson City **E2**
3. Klauene National Park and Reserve **H2**
4. Emerald Lake **H3**
5. Five Finger Rapids **G3**
6. Tombstone Territorial Park **E2**
7. Haines Highway **H2**

3 key tips for road trips

- 1. SUPPLIES**
You may have to travel long distances between gas stations and food stops, so fill 'er up and stock up on snacks when you can. No hungry driving, please.
- 2. WILDLIFE**
Watch out for four-legged locals on or near the road, particularly around dawn and dusk. Keep your distance and avoid lingering.
- 3. NAVIGATION**
No cell service in some locations means, "goodbye Google Maps." Keep a compass handy and use this map to mark your routes.

Unfold wonders, not maps.

Download the Yukon Sights and Sites app. Think of it as your virtual guide to real campgrounds, real wildlife viewing and real points of interest.



4 unique Yukon experiences checklist

- We double dare you to give these a try:
- Swig a Sour Toe Cocktail in Dawson City **E2**
 - Get lost in a Sign Post Forest at Watson Lake **I5**
 - Cross into the Arctic Circle on the legendary Dempster Highway **C3**
 - Sandboard down the dunes of the world's smallest desert near Carcross **H3**